

# Alles zum Thema Gutachter

1. Evaluierungsprozess
2. Rolle des Gutachters
3. Gutachterdatenbank

EU-Gutachter in Horizon 2020: Informationen und Erfahrungsaustausch

Bonn, 22. Januar 2015

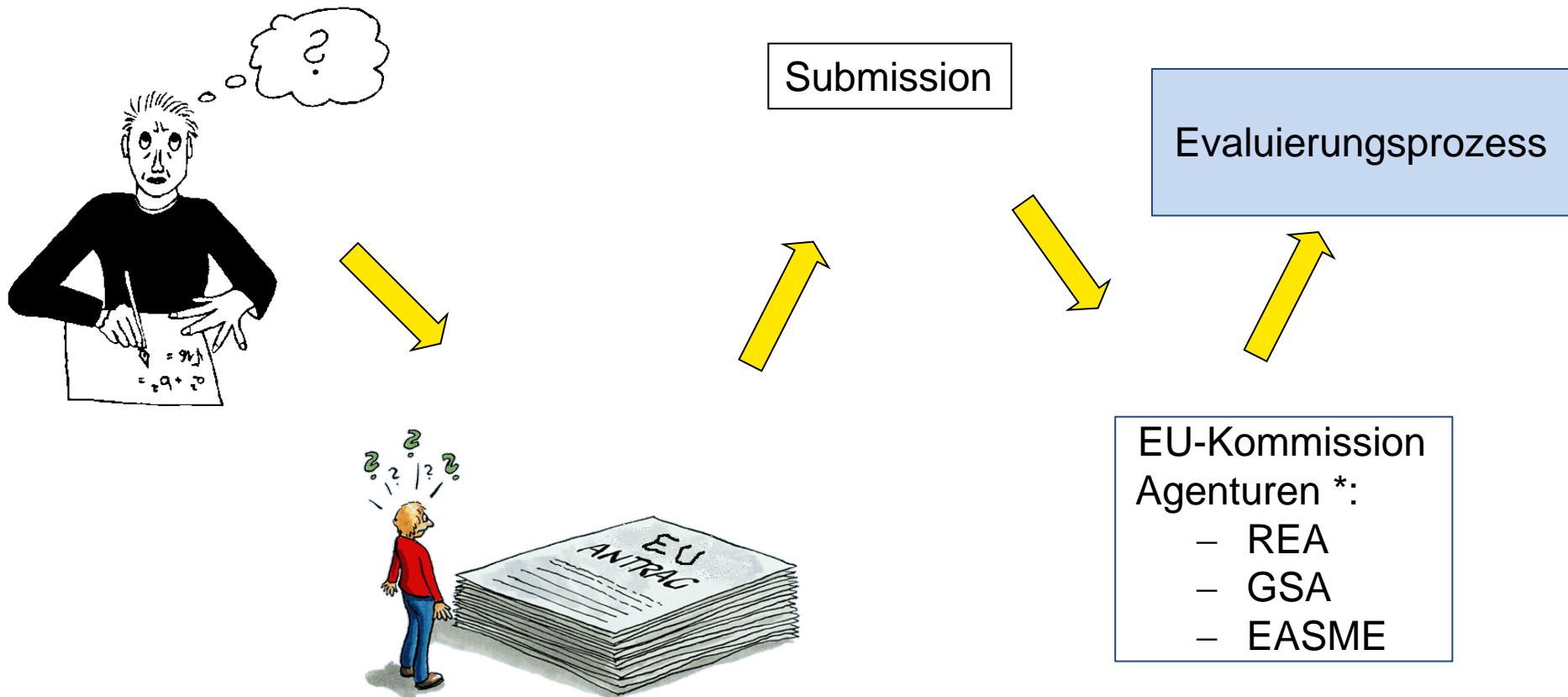
Brigitte Ulamec



Wissen für Morgen



# Horizon 2020 – Projekt Evaluierung



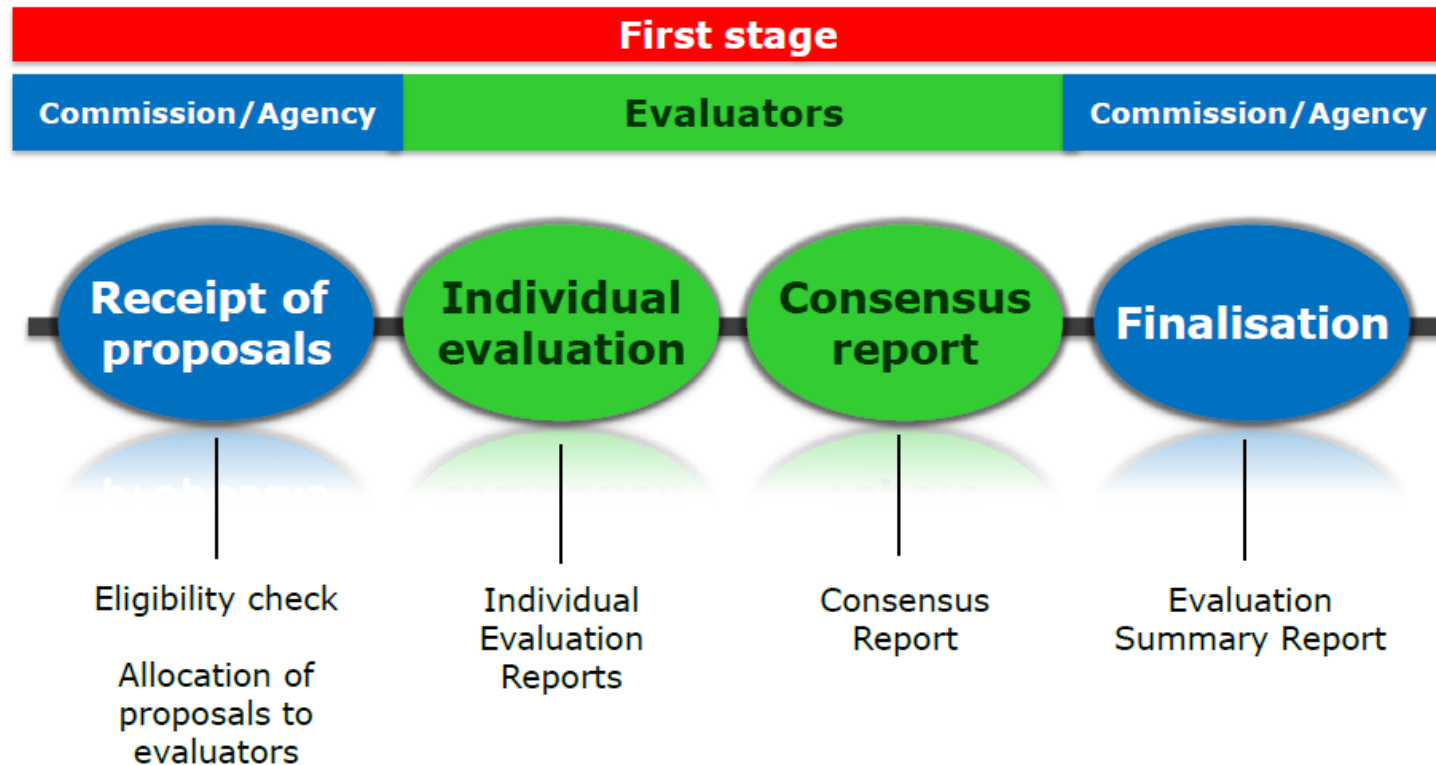
\* Research Executive Agentur (REA); European GNSS Agency (GSA); Executive Agency for SMEs (EASME)



# 1. Evaluierungsprozess

Raumfahrt: „First stage“ - einstufiges Evaluierungsverfahren

Andere Bereiche z.B. Umwelt, IKT etc.: „First and Second stage“ Evaluierung

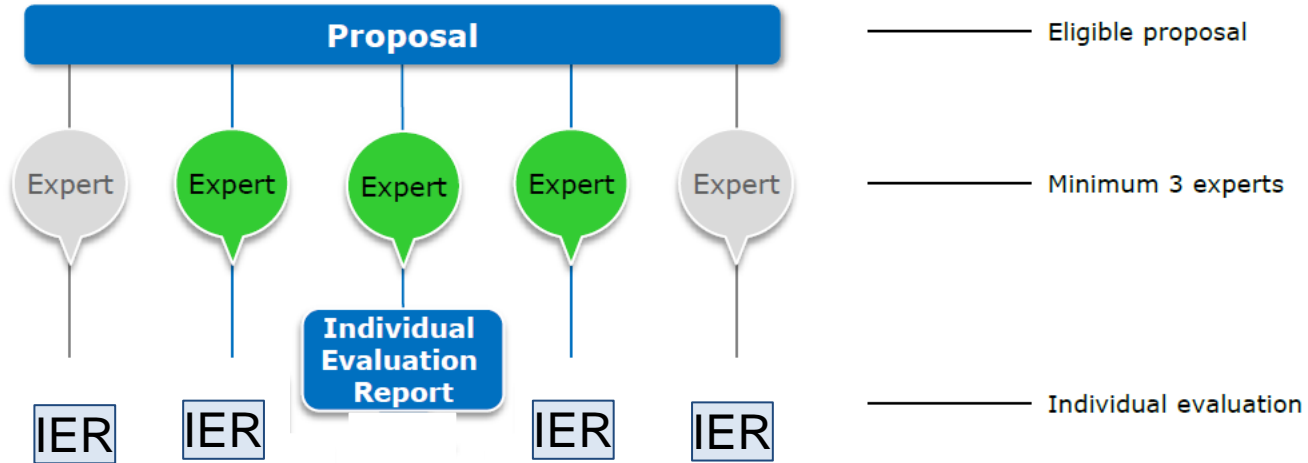


## Formale Kontrolle der Anträge (eligible)

- Zulässigkeit
  - Kommission / Agentur
  - Antrag: lesbar, komplett und druckbar, Nutzung + Verbreitung der Ergebnisse
- Teilnahmebedingungen:
  - Kommission / Agentur
  - Minimum Anzahl der Teilnehmer
  - Andere Bedingungen (wie im Call-Topic definiert wurden)
  - Gutachter: Kontrolle auch während der Evaluierung
- „Out of scope“
  - Gutachter



# Prozess der Evaluierung



HORIZON 2020



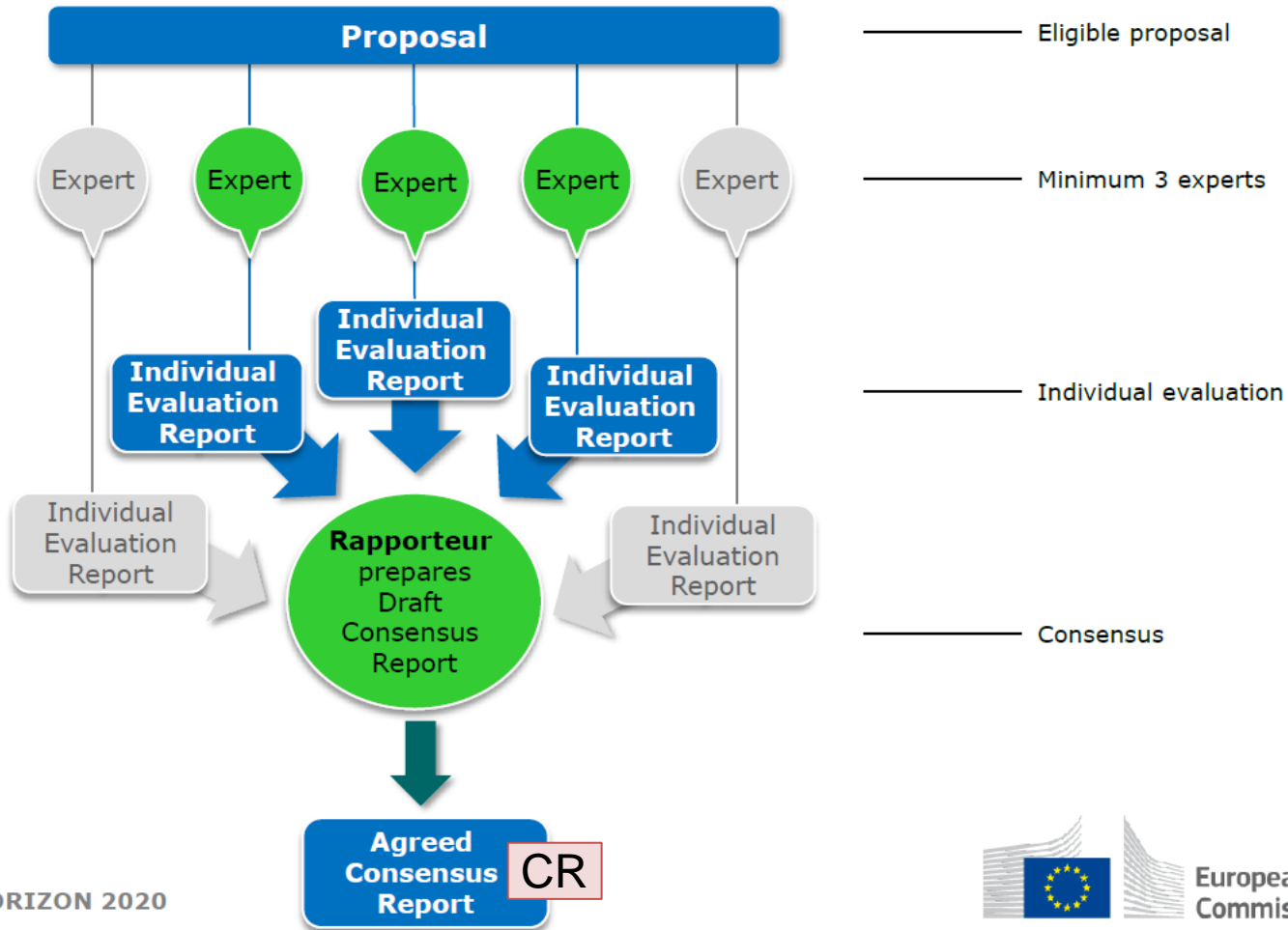
## Individual Evaluation:

- Wird zu Hause durchgeführt
- Unterschiedliche Anzahl an Projekten; aber ein ausgewähltes Topic
- Zugang zum „on-line evaluation system“
  
- Briefing der Kommission
  - Horizon 2020 allgemein (Innovation)
  - Arbeitsprogramm, guides for Applicants etc
  - Grant Manual - Section on: Proposal submission and evaluation
  - Instrumente
  - Begutachungskriterien
  - Punktesystem (zwischen 0 und 5)
  
- Erstellen eines Individual Evaluation Reports (IER) pro Antrag





# Prozess der Evaluierung

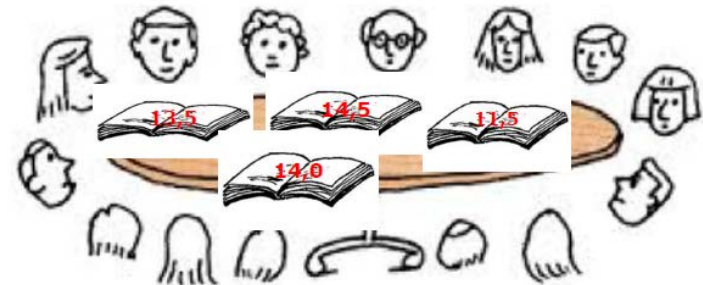


HORIZON 2020



# Consensus

- Für jeden Antrag:
  - Gutachter einigen sich auf eine Beurteilung
  - Geprüft ob Punktezahl mit Kommentaren übereinstimmt
  - Consensus Report (pro Antrag)
  
- Rapporteurs + „quality controllers“



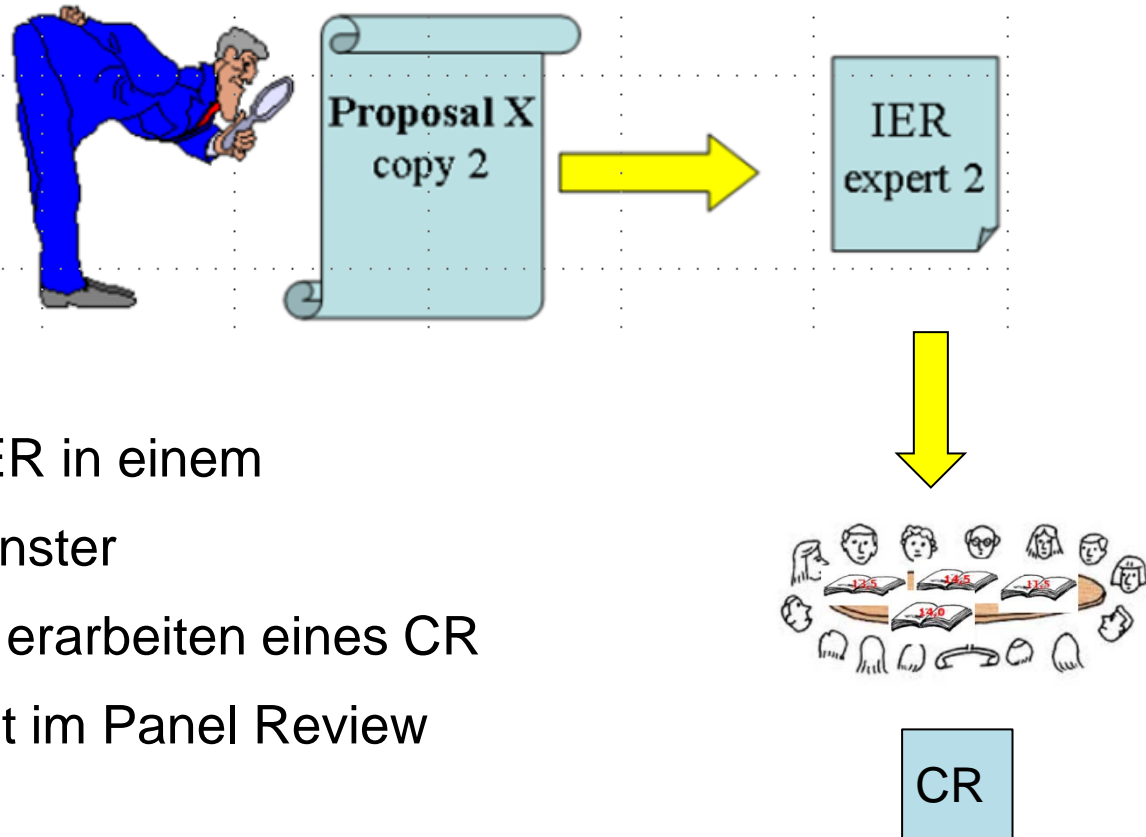
## Panel Review

- Basis ist der Consensus Report
- Evaluation summary report
- Liste der Anträge mit einer Empfehlung des „Rankings“
- Listen ....
- Empfehlungen des Panels (Verbesserungen)





## 2. Rolle des Gutachters:



- Erstellung eines IER in einem bestimmten Zeitfenster
- Danach im Team, erarbeiten eines CR
- (Optional) Mitarbeit im Panel Review



## Voraussetzungen für die Gutachtertätigkeit:

- Fachexpertise für die betreffende Ausschreibung
- Besitz eines Hochschulabschlusses
- praktische Erfahrung (i.d.R. werden ca. 5 Jahre erwartet)
- ausreichend Englisch-Kenntnisse
- Bereitschaft für gelegentliche, mehrtägige Einsätze
  
- Verpflichtung zur Vertraulichkeit
- Keine Interessenkonflikte



## Interessenskonflikt:

- Irgendwie in/an dem Projekt beteiligt (z.B. direkt/indirekter Nutzer, Verwandter, Partner in einem Projekt, Unterauftragnehmer)
  - Beratungsgruppe: Advisory Group, Nationale Kontaktstelle, Enterprise Europe Network
  - Irgendein anderer Grund, welcher die Unbefangenheit in Frage zieht:  
z.B Beschäftigungsverhältnis zum Antragsteller innerhalb der letzten 3 Jahre; irgendeine Vereinbarung zum Antragsteller ....
- Möglicher Interessenskonflikt muss sofort an die Kommission /Agentur gemeldet werden!



## Leitsätze der Gutachtertätigkeit:

- Independence  
Persönlicher Einsatz; nicht als Repräsentant seiner Einrichtung, oder Landes
- Impartiality  
Alle Anträge sind neutral und gleich zu behandeln
- Objectivity  
Nur das bewerten, was am Papier steht (keine Interpretationen)
- Accuracy  
Bewertung erfolgt nach den Evaluierungskriterien
- Consistency  
Der gleiche Standard der Bewertung wird für alle Projekte angewandt



## Auswahl von Gutachtern:

- Eintrag in der Datenbank (gilt für gesamt H2020)

- Registrierung jederzeit möglich:

<http://ec.europa.eu/research/participants/portal4/desktop/en/experts/index.html>

- ❖ Kommission/Agentur sucht daraus die Gutachter nach:

- Qualifikation/Fachkompetenz

Zusätzlich:

- Ausgewogenes Verhältnis von Frauen und Männern
- Geografische Vielfalt
- Ausgeglichene Beteiligung verschiedener Sektoren wie Hochschulen, Industrie, anderer Organisationen

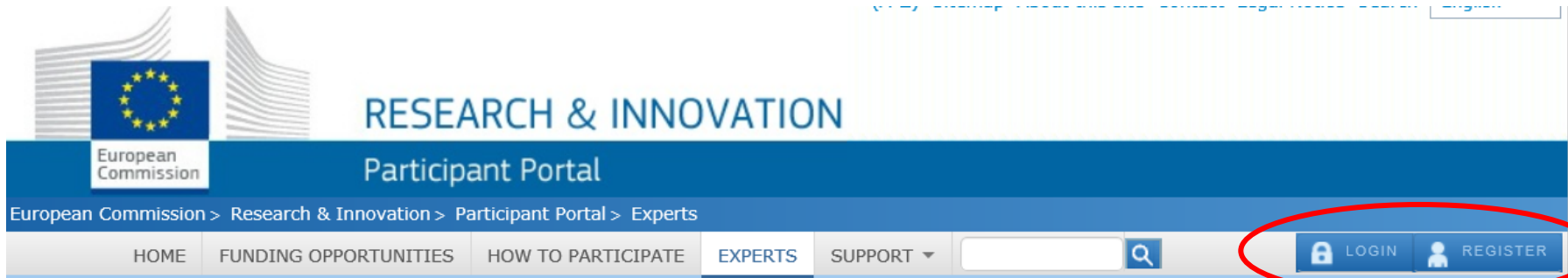
Inoffiziell:

- Bekanntheit?



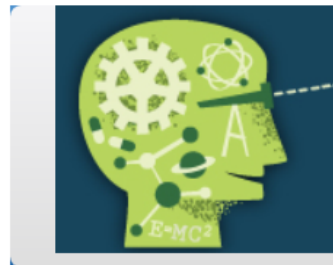
# 3. Eintrag in der Datenbank

<http://ec.europa.eu/research/participants/portal4/desktop/en/experts/index.html>



## News

The [3rd Health Programme](#) and the [Consumer Programme](#), managed by the Consumer, Health and Food Executive Agency (CHAFEA), and the [Research Fund for Coal and Steel \(RFCS\)](#) are now using the [European Commission's experts database](#) to select experts for assignments including the evaluation of proposals and monitoring of projects. If you are already registered as an expert and wish to also indicate your interest in these programmes, please [update your profile](#) by ticking "RFCS (Research Fund for Coal and Steel)" and/or "Third Health



## Experts

H2020 ONLINE MANUAL

Join the database of independent experts for European research and innovation.

The European Commission appoints independent experts to assist with research and innovation assignments including the evaluation of proposals, monitoring of projects, and evaluation of programmes, and design of policy.

### New experts

#### Who can be an expert?

You have a chance of being selected as an expert if you:

- have high-level of expertise in the relevant fields of research and innovation ([see call](#) for details on types of expertise).
- can be available for occasional, short-term assignments

[REGISTER AS EXPERT](#)

#### What do expert assignments involve?

Experts, as peer reviewers, assist in the:

- **evaluation** of proposals
- **monitoring** of actions

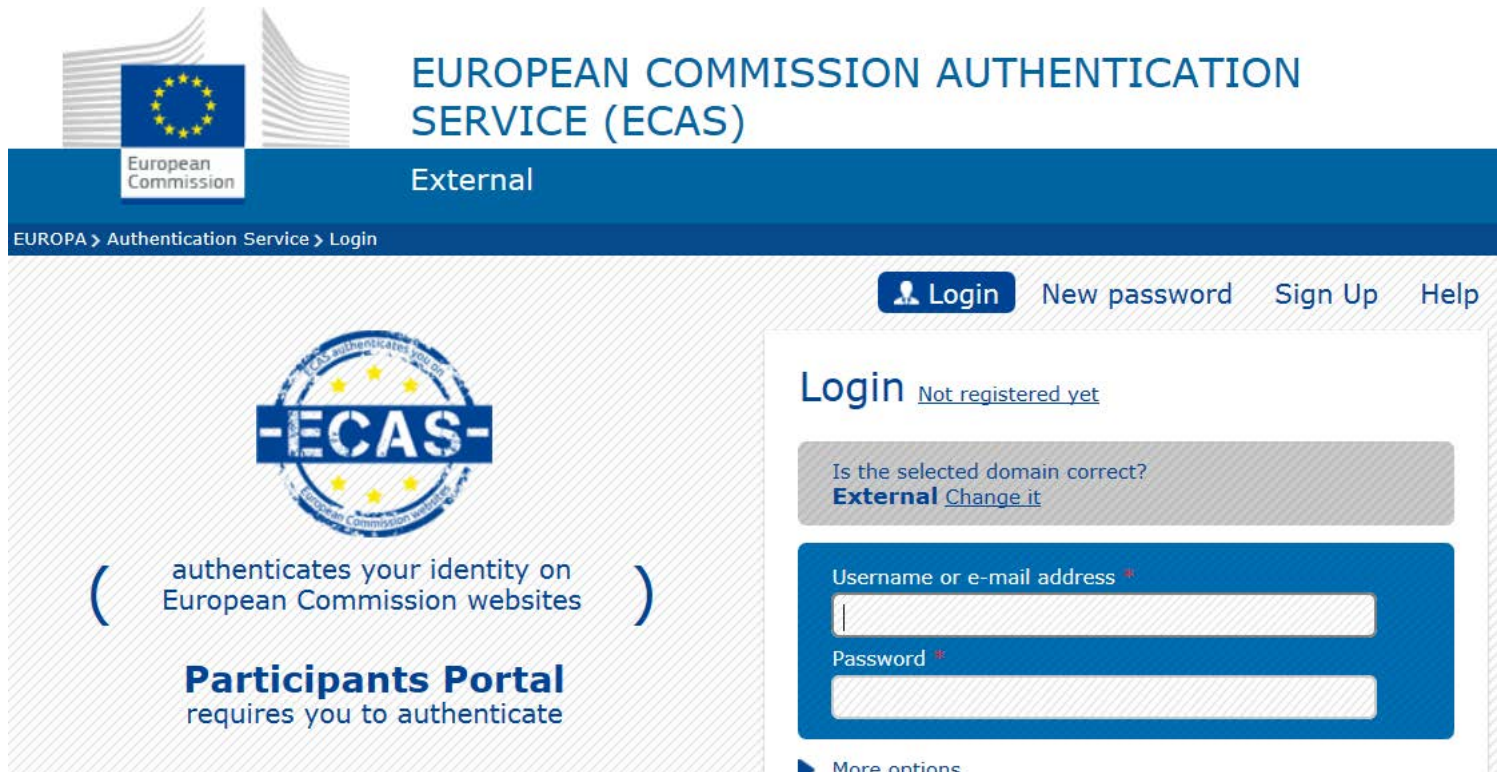
In addition, experts assist in the :

- **preparation, implementation or evaluation of programmes** and **design of policies**. This includes the





# ECAS-Anmeldung



The screenshot shows the ECAS login interface. At the top left is the European Commission logo. The main title is "EUROPEAN COMMISSION AUTHENTICATION SERVICE (ECAS)". Below this is a blue navigation bar with "External" and a breadcrumb "EUROPA > Authentication Service > Login". On the right of the bar are links for "Login", "New password", "Sign Up", and "Help". The main content area features the ECAS logo, a note that it authenticates users on European Commission websites, and a requirement for the "Participants Portal". To the right is a login form with fields for "Username or e-mail address" and "Password", and a "More options" link.


European Commission

## EUROPEAN COMMISSION AUTHENTICATION SERVICE (ECAS)

External

EUROPA > Authentication Service > Login

[Login](#) [New password](#) [Sign Up](#) [Help](#)



( authenticates your identity on European Commission websites )

**Participants Portal** requires you to authenticate

**Login** [Not registered yet](#)

Is the selected domain correct?  
**External** [Change it](#)

Username or e-mail address \*

Password \*

More options



> H2020 Online Manual > Working as an expert >

Expert registration

Contracting & payment

Expert roles & tasks

# Working as an expert

HOW TO

Informationen zum Vertrag mit der Kommission

## Introduction

The Commission needs input from external experts given the broad range of research domains covered by the framework

HOME

FUNDING OPPORTUNITIES

HOW TO PARTICIPATE

EXPERTS

SUPPORT



LOGIN



REGISTER

## News

The [3rd Health Programme](#) and the [Consumer Programme](#), managed by the Consumer, Health and Food Executive Agency (CHAFAEA), and the [Research Fund for Coal and Steel \(RFCS\)](#) are now using the [European Commission's experts database](#) to select experts for assignments including the evaluation of proposals and monitoring of projects. If you are already registered as an expert and wish to also indicate your interest in these programmes, please [update your profile](#) by ticking "RFCS (Research Fund for Coal and Steel)" and/or "Third Health



## Experts

H2020 ONLINE MANUAL

Join the database of independent experts for European research and innovation.

The European Commission appoints independent experts to assist with research and innovation assignments including the evaluation of proposals, monitoring of projects, and evaluation of programmes, and design of policy.

## New experts

### Who can be an expert?

You have a chance of being selected as an expert if you:

- have high-level of expertise in the relevant fields of research and innovation ([see call](#) for details on types of expertise).
- can be available for occasional, short-term assignments

REGISTER AS EXPERT

### What do expert assignments involve?

Experts, as peer reviewers, assist in the:

- **evaluation** of proposals
- **monitoring** of actions

In addition, experts assist in the :

- **preparation, implementation or evaluation of programmes and design of policies.** This includes the

European Commission

# RESEARCH & INNOVATION

## Participant Portal - Expert Area

LOGOUT

European Commission > Research > Participant Portal

- PROGRAMME selection
- PERSONAL details
- LANGUAGES
- EDUCATION
- AREA of expertise
- PROFESSIONAL experience

Welcome

Candidature number  
EX2014D220596

0/6 Status Invalid  
See details

- Programme Selection
- Personal Details
- Languages
- Education
- Area of Expertise
- Professional Experience

### Programme Selection

We respect your privacy. You can consult the privacy statements for Experts on the [Participant Portal \(PP\) page](#) covering all the PP data protection and privacy conditions

For each of its programmes, the Commission and its agencies published calls for expression of interest for experts (call texts accessible by clicking on programmes below).

Tasks consist of assisting in the:

- **Evaluation** of proposals;
- **Monitoring** of actions;
- **Preparation, implementation or evaluation** of programmes and **design** of policies.

Questions?



# Area of Expertise

Please tell us about your field of expertise using the interactive navigation trees provided and finally in your own words



**A** Specialist Field(s)

**B** Pre-defined Themes

**C** Open Keywords

## My Specialist Field(s)

Please let us know your specialist field(s) using the interactive tree accessible below.

**Please select at least one specialist field per programme**



Knowing your field of expertise helps us to match your profile to relevant assignments.

1. H2020->Science->NATURAL SCIENCES->Earth and related Environmental sciences -> **Palaeontology**

2. H2020->Science->NATURAL SCIENCES->Earth and related Environmental sciences->Physical geography -> **Geographical information systems, cartography**

Ausgewähltes  
Beispiel

<< Back

Update specialist fields

Continue >>

# Wissenschaftsbereiche:

## Specialist field(s)

### Selected specialist field(s)

1. Palaeontology
2. Geographical information systems, cartography

Cancel Save

Identify your specialist field(s) directly in the interactive tree or use the search box. For Horizon 2020, note that it is only possible to select your specialist field(s) at a certain level or below e.g. Science/Natural Sciences/Mathematics/Pure mathematics, Applied mathematics.

Search

- Astronomy (including astrophysics, space science)
- Earth observations from space/remote sensing
- Aerospace engineering 
  - Space Environment
  - AMG Airspace Management
- Space 
  - Space equipments subsystems
  - Upper atmosphere and space environment
  - Space platforms
  - Space Operations monitoring
  - Launch Vehicles for Space Systems
  - Space food
- Space medicine

Ausgewähltes Beispiel

Ausgewähltes Beispiel



# Vordefinierter Bereiche im Arbeitsprogramm

## Pre-defined themes

Selected pre-defined themes(select at least 2)

- 1. Space
- 2. Innovation in SMEs
- 3. Smart, green and transport

Ausgewähltes  
Beispiel

Identify themes directly in the interactive tree or use the search box

Search

- Horizon 2020 cross-cutting issues
- Horizon 2020 areas
  - Future and Emerging Technologies
  - Marie-Sklodowska-Curie Actions
  - Research Infrastructures
  - Information and Communication Technologies
  - Nanotechnologies
  - Advanced materials
  - Biotechnology
  - Advanced manufacturing and processing
  - Space
  - Access to risk finance
  - Innovation in SMEs
  - Health, demographic change and wellbeing





**A** Specialist Field(s)

**B** Pre-defined Themes

**C** Open Keywords

## My open keywords

Please describe your expertise **using at least 3 keywords or phrases**. Type a single keyword or phrase into the field provided and click the **Add keyword/phrase** button. Repeat to add another keyword.

 To complete our view of your area of expertise, describe your specialisation using your own keywords or phrases.

**Add keyword/phrase**

(max 2000 characters)

Applications and Services



EGNOS



Galileo



Tipp: Nehmen Sie als Vorlage das Arbeitsprogramm und suchen Sie sich die relevanten Stichwörter heraus ....

<< Back

Cancel

Save and continue >>

# Zusammenfassung

- Unabhängige Gutachter evaluieren die Anträge
  - Peer review Verfahren
  - Auswahl der Gutachter via Datenbank
  - Zeitaufwand der Anmeldung: überschaubar
  - Open Keywords: mehr Zeitaufwand + regelmäßig aktualisieren
  - Besuchen Sie EU-Veranstaltungen (Bekannt ...)
- 
- Nützen Sie die Möglichkeit sich mit Gutachtern auszutauschen:

## Ihre Fragen ??

