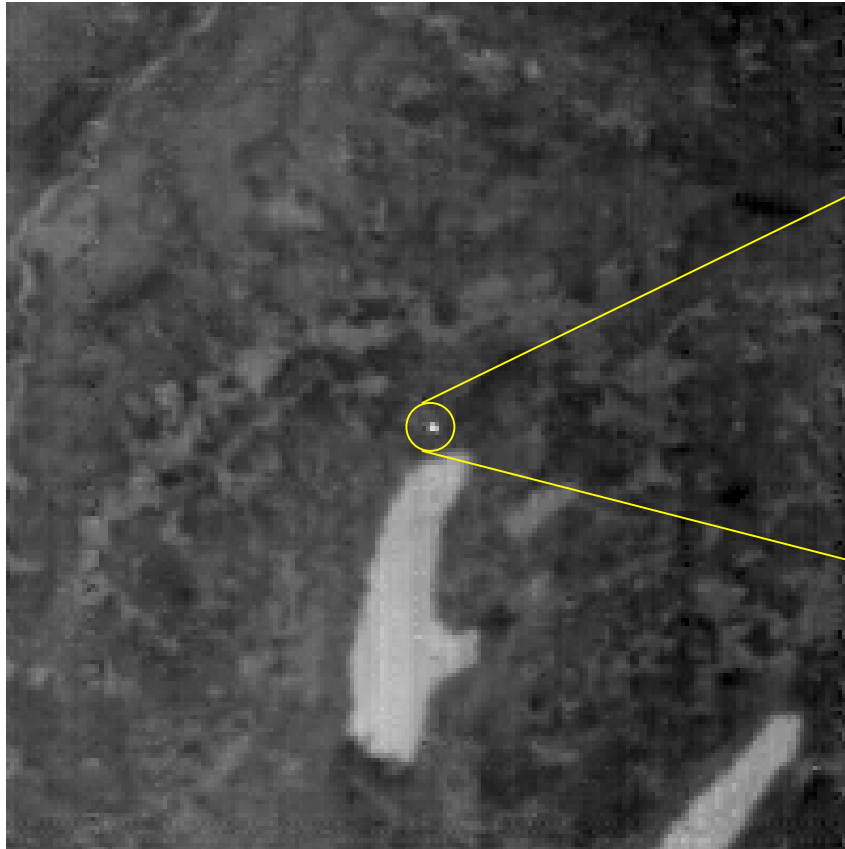




## On-ground verification of night-time BIRD fire detection ( 18 January 2003, Ammersee area, Germany)



BIRD image in MIR channel:  
Estimated fire energy release = 0.11 MW



On-ground image of the test fire:  
Size =  $2 \times 2 \text{ m}^2$   
Max. temperature = 930-990 K  
Energy release < 0.17-0.22 MW