

DESIS Mission

Proposal Process and EOWEB Functionalities

Uta Heiden, Martin Bachmann, Kevin Alonso, Emiliano Carmona, Daniele Cerra, Daniele Dietrich, Maximilian Langheinrich, Raquel de Los Reyes, David Marshall, Rupert Mueller

German Aerospace Center (DLR)
28.09.2021, DLR (Online)



Wissen für Morgen



Content

- DESIS data access for scientific purposes
- EOWEB functionalities
- DESIS data product components

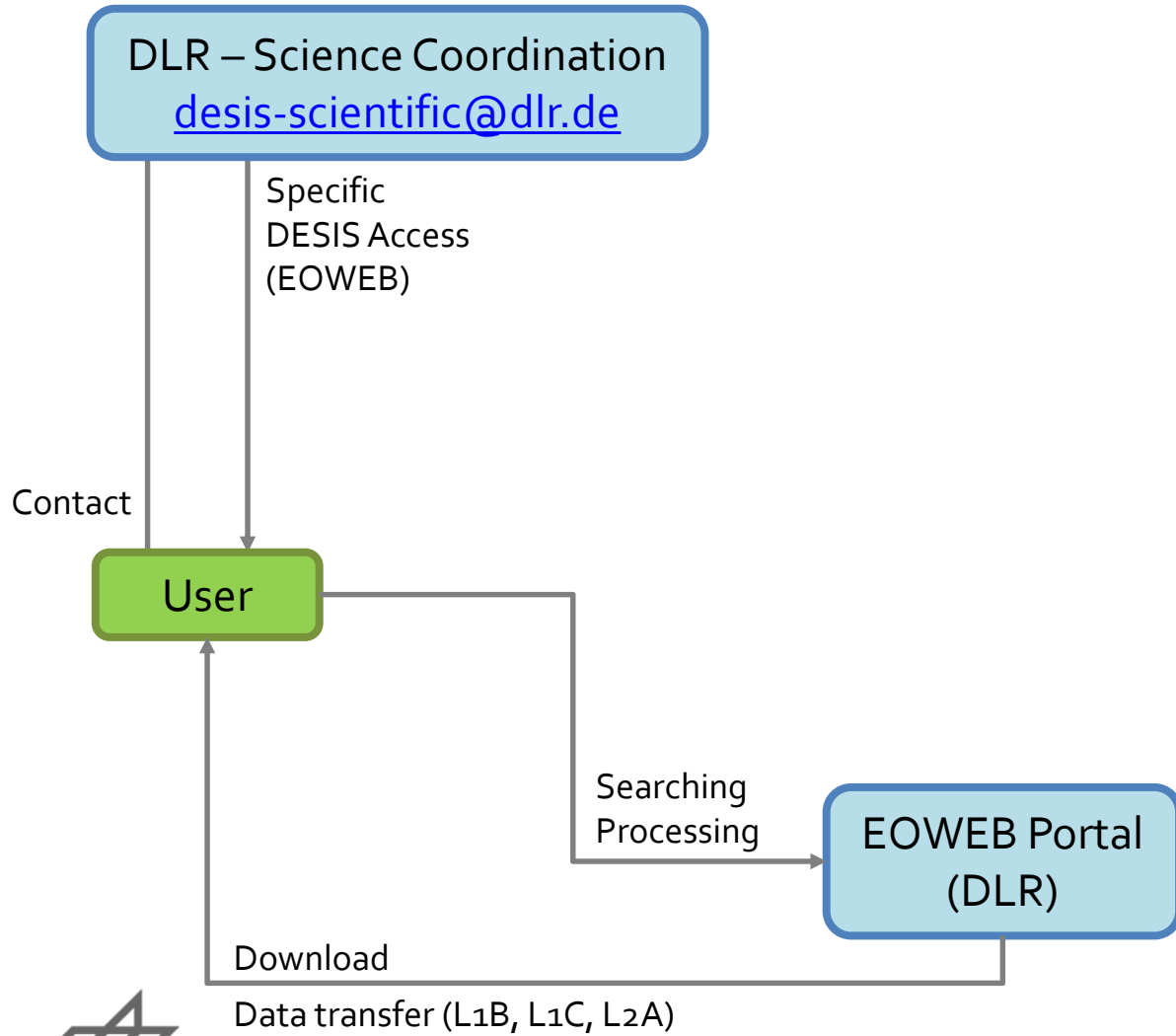
DESI data access for scientific purposes

Scientific use not restricted to any specific topic but it can include:

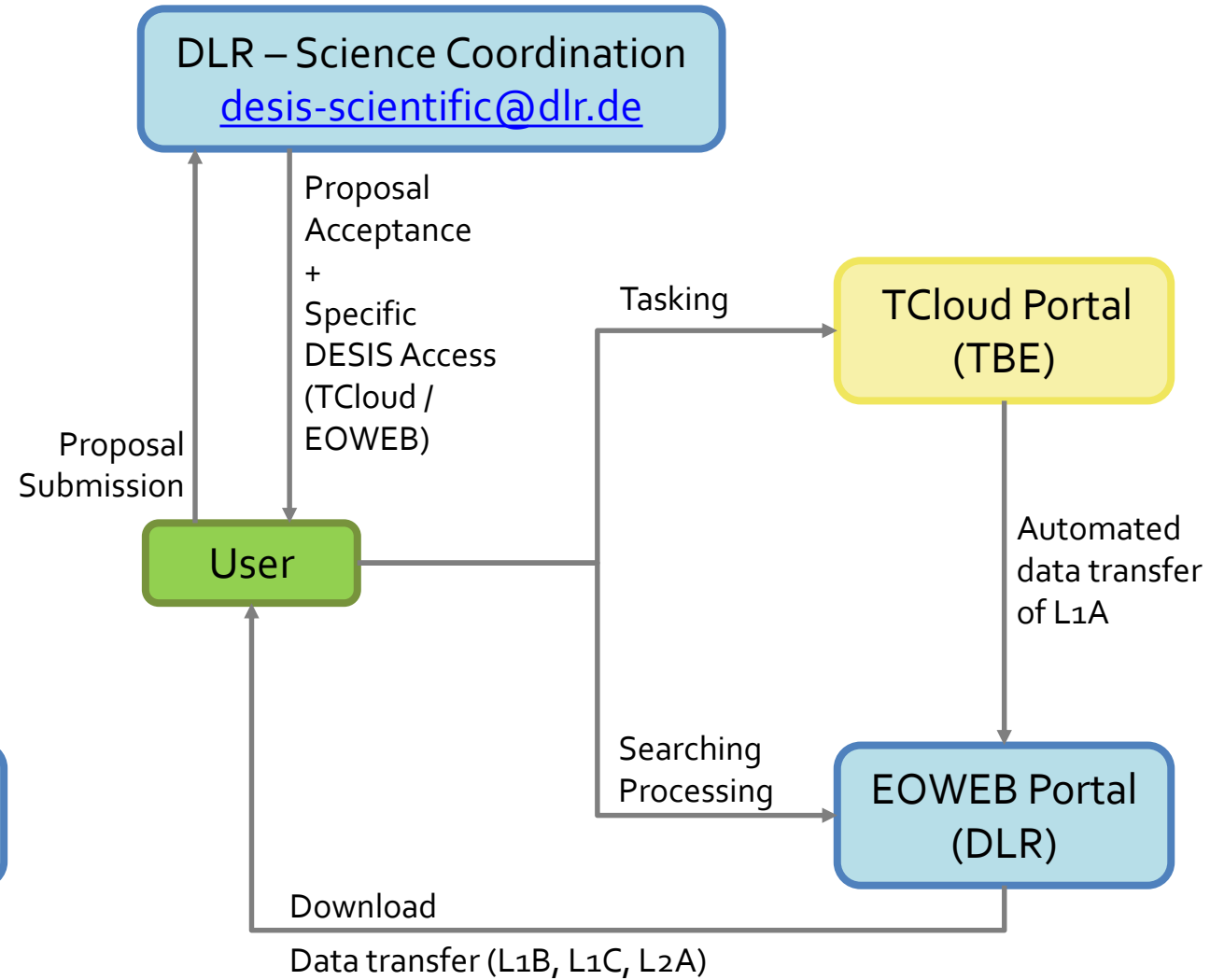
- Basic and application oriented research,
- Preparation and execution of government-funded education, research and development programs,
- Development and demonstration of future applications for scientific and/or operational use,
- Support of the MUSES mission (e.g. calibration, monitoring and validation) and
- Exploring synergies with other operating and upcoming Earth observing sensors onboard ISS such as ECOSTRESS, GEDI and OCO-3 (all NASA), the hyperspectral HISUI (METI) and future sensor systems integrated into MUSES.

DESIS Data Access – Two Possibilities

(1) Order archived data



(2) Tasking new DESIS data



DESI Data Access – Tasking new DESIS data

1. Preparation of a Science Proposal - https://www.dlr.de/eoc/desktopdefault.aspx/tabid-13629/23675_read-54295

- Read the Announcement of Opportunity
- Download and complete the proposal template (Each proposal can order up to 50 tiles; 1 tile = 900 km²)
 - Principal Investigator (PI) contact information
 - Proposal Title
 - Team members (Co-I) (at least one representative of each institute of the project team)
 - Executive summary (maximum 4000 characters)
 - Objectives (maximum 1000 characters)
 - Methodology (maximum 2000 characters)
 - Area of Interest (area restrictions may applied by the US government)
 - KML/KMZ file
 - Observation window (max. 1 year) – renewal of proposals is possible
 - Recurrence: (1) None, (2) Interval/days, (3) Standing
- Send the proposal + KML/KMZ to desis-scientific@dlr.de

DESIS Data Access – Tasking new DESIS data

2. Proposal evaluation and acceptance

- Evaluation done by DESIS Science Coordination Team
 - Check, if the proposed idea follow the DESIS mission criteria and contain a scientific purpose
 - Check for consistency between basic idea and amount of data
- Get all information for tasking, processing and downloading DESIS data from desis-scientific@dlr.de
 1. TCloud access + Proposal ID (required for tasking)
 2. EOWEB access - specific DESIS register link!

3. Tasking (Tcloud) – no further users activity necessary

4. Searching, processing, downloading (EOWEB)

EOWEB functionalities

Filter Management

Filter:

Clear Filters

Hide Filter Gallery

Filter by Region



Show Advanced Map

Filter by Time

Starttime

1970-01-01

00 HH 00 MM

Endtime

2021-09-24

23 HH 59 MM

Choose a range

Filter by Collection

- ISX-1 Experimental Products
- TanDEM-X
- IRS
- Thematic Maps
- FireBIRD
- TanDEM-X Pursuit TSX-1 Like
- TanDEM-X Pursuit TSX-1 Like Experimental
- DESIS

Search

0 of 20 results selected

Toggle View

Show items: 20

Go to: 1 / 5

Nr	Avail.	Product Type	Start Date	End Date	Mission/Satellite	Satellite Number	Sensor/Instrument	Pass Direction	Polarisation Mode	Imaging Mode	DEM Identifier	DEM Tile Status	DEM Valids [%]	Average Terrain Height	Hide Preview
TDM-DEM-12m															
1	●	TDM-DEM-12m	2010-12-25T17:08:40.969Z	2013-04-04T17:02:43.208Z	TDM	TDM	DEM	ascending	single	SM	TDM1_DEM_04_N53E010	COMPLETED	99.9714542262065	82.7925502	
2	●	TDM-DEM-12m	2011-02-13T16:59:03.891Z	2013-04-21T16:53:55.827Z	TDM	TDM	DEM	ascending	single	SM	TDM1_DEM_04_N53E011	COMPLETED	99.9956845321543	83.6241171	
3	●	TDM-DEM-12m	2011-02-13T16:59:03.891Z	2013-04-21T16:53:55.827Z	TDM	TDM	DEM	ascending	single	SM	TDM1_DEM_04_N53E012	COMPLETED	99.9871628253788	101.0904444	
4	●	TDM-DEM-12m	2011-01-06T16:50:59.829Z	2013-07-07T16:53:26.598Z	TDM	TDM	DEM	ascending	single	SM	TDM1_DEM_04_N53E013	COMPLETED	99.2253670420186	92.2770079	
5	●	TDM-DEM-12m	2011-01-06T16:50:59.829Z	2013-05-08T16:44:40.202Z	TDM	TDM	DEM	ascending	single	SM	TDM1_DEM_04_N53E014	COMPLETED	89.2946942646544	67.0072195	LIMIT
6	●	TDM-DEM-12m	2011-05-12T16:59:21.478Z	2013-04-04T17:02:43.208Z	TDM	TDM	DEM	ascending	single	SM	TDM1_DEM_04_N54E010	COMPLETED	45.8338767780454	71.0058719	LIMIT
7	●	TDM-DEM-12m	2011-05-12T16:59:21.478Z	2013-05-24T16:53:35.434Z	TDM	TDM	DEM	ascending	single	SM	TDM1_DEM_04_N54E011	COMPLETED	39.6761984693845	50.6731251	
8	●	TDM-DEM-12m	2011-06-20T16:50:03.461Z	2013-07-07T16:53:26.598Z	TDM	TDM	DEM	ascending	single	SM	TDM1_DEM_04_N54E012	COMPLETED	42.8783311510075	55.4912369	
9	●	TDM-DEM-12m	2011-01-28T16:52:05.496Z	2013-07-07T16:53:26.598Z	TDM	TDM	DEM	ascending	single	SM	TDM1_DEM_04_N54E013	COMPLETED	43.9133177096488	50.329714	LIMIT
10	●	TDM-DEM-12m	2011-05-12T16:59:21.478Z	2013-05-02T16:53:45.029Z	TDM	TDM	DEM	ascending	single	SM	TDM1_DEM_04_N55E010	COMPLETED	47.7222799644121	72.7095605	
11	●	TDM-DEM-12m	2011-05-23T16:59:40.434Z	2013-05-24T16:53:35.434Z	TDM	TDM	DEM	ascending	single	SM	TDM1_DEM_04_N55E011	COMPLETED	64.4179197552917	61.9791967	LIMIT
12	●	TDM-DEM-12m	2011-02-13T16:59:03.891Z	2012-11-18T16:53:17.000Z	TDM	TDM	DEM	ascending	single	SM	TDM1_DEM_04_N52E011	COMPLETED	100.0	104.8397996	
13	●	TDM-DEM-12m	2011-01-06T16:50:59.829Z	2013-07-07T16:53:26.598Z	TDM	TDM	DEM	ascending	single	SM	TDM1_DEM_04_N51E014	COMPLETED	100.0	195.1557184	
14	●	TDM-DEM-12m	2010-12-25T17:08:40.969Z	2013-07-12T17:01:34.711Z	TDM	TDM	DEM	ascending	single	SM	TDM1_DEM_04_N52E010	COMPLETED	100.0	131.3323923	
15	●	TDM-DEM-12m	2011-02-13T16:59:03.891Z	2013-04-21T16:53:55.827Z	TDM	TDM	DEM	ascending	single	SM	TDM1_DEM_04_N52E012	COMPLETED	100.0	96.771819	
16	●	TDM-DEM-12m	2011-01-06T16:50:59.829Z	2013-07-07T16:53:26.598Z	TDM	TDM	DEM	ascending	single	SM	TDM1_DEM_04_N52E013	COMPLETED	100.0	97.984324	
17	●	TDM-DEM-12m	2010-12-25T17:08:40.969Z	2013-11-15T17:09:33.125Z	TDM	TDM	DEM	ascending	single	SM	TDM1_DEM_04_N49E010	COMPLETED	100.0	422.4309395	
18	●	TDM-DEM-12m	2011-01-06T16:50:59.829Z	2013-07-07T16:53:26.598Z	TDM	TDM	DEM	ascending	single	SM	TDM1_DEM_04_N52E014	COMPLETED	100.0	95.0212194	
19	●	TDM-DEM-12m	2010-12-25T17:08:40.969Z	2013-11-15T17:09:33.125Z	TDM	TDM	DEM	ascending	single	SM	TDM1_DEM_04_N49E011	COMPLETED	100.0	505.1258901	
20	●	TDM-DEM-12m	2010-12-25T17:08:40.969Z	2013-11-15T17:09:33.125Z	TDM	TDM	DEM	ascending	single	SM	TDM1_DEM_04_N50E010	COMPLETED	100.0	451.095073	

EOWEB functionalities

Filter Management ▾

Filter: ✕ Collections

Clear Filters

Hide Filter Gallery

Filter by Region ⓘ



Show Advanced Map

Filter by Time ⓘ

Starttime

1970-01-01

00 HH 00 MM

Endtime

2021-09-27

23 HH 59 MM

Choose a range ▾

Filter by Collection ⓘ

- ISX-1 Experimental Products
- TanDEM-X
- IRS
- Thematic Maps
- FireBIRD
- TanDEM-X Pursuit TSX-1 Like
- TanDEM-X Pursuit TSX-1 Like Experimental
- DESIS**

Search

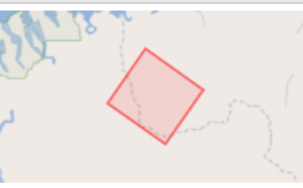
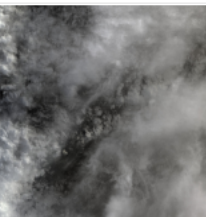
0 of 20 results selected

Toggle View



Show items: 20

Go to: 1 / 544

Nr	Avail.	Product Type	Start Date	End Date	Mission/Satellite	Sensor Mode	Satellite Number	Sensor/Instrument	Incidence Angle	Scene Center	Pass Direction	Data take ID	Tile ID	Version	Hide Preview
DESIS.HSIL1A															
1	●	DESIS.HSIL1A	2021-09-19T20:59:11.529Z	2021-09-19T20:59:15.873Z	ISS	image_strip_mode	1	DESIS	4.42	ASCENDING	634326888	009	02.13	DESIS.HSIL1A:/dims_n	
2	●	DESIS.HSIL1A	2021-09-19T20:59:07.178Z	2021-09-19T20:59:11.524Z	ISS	image_strip_mode	1	DESIS	4.42	ASCENDING	634326888	008	02.13	DESIS.HSIL1A:/dims_n	
3	●	DESIS.HSIL1A	2021-09-19T20:59:02.829Z	2021-09-19T20:59:07.175Z	ISS	image_strip_mode	1	DESIS	4.42	ASCENDING	634326888	007	02.13	DESIS.HSIL1A:/dims_n	
4	●	DESIS.HSIL1A	2021-09-19T20:58:58.479Z	2021-09-19T20:59:02.824Z	ISS	image_strip_mode	1	DESIS	4.42	ASCENDING	634326888	006	02.13	DESIS.HSIL1A:/dims_n	
5	●	DESIS.HSIL1A	2021-09-19T20:58:54.128Z	2021-09-19T20:58:58.475Z	ISS	image_strip_mode	1	DESIS	4.42	ASCENDING	634326888	005	02.13	DESIS.HSIL1A:/dims_n	
6	●	DESIS.HSIL1A	2021-09-19T20:58:49.779Z	2021-09-19T20:58:54.125Z	ISS	image_strip_mode	1	DESIS	4.41	ASCENDING	634326888	004	02.13	DESIS.HSIL1A:/dims_n	
7	●	DESIS.HSIL1A	2021-09-19T20:58:45.429Z	2021-09-19T20:58:49.774Z	ISS	image_strip_mode	1	DESIS	4.41	ASCENDING	634326888	003	02.13	DESIS.HSIL1A:/dims_n	
8	●	DESIS.HSIL1A	2021-09-19T20:58:41.078Z	2021-09-19T20:58:45.425Z	ISS	image_strip_mode	1	DESIS	4.41	ASCENDING	634326888	002	02.13	DESIS.HSIL1A:/dims_n	
9	●	DESIS.HSIL1A	2021-09-19T06:55:22.657Z	2021-09-19T06:55:27.003Z	ISS	image_strip_mode	1	DESIS	3.1	ASCENDING	634312516	002	02.13	DESIS.HSIL1A:/dims_n	
10	●	DESIS.HSIL1A	2021-09-19T03:43:38.457Z	2021-09-19T03:43:42.803Z	ISS	image_strip_mode	1	DESIS	11.27	ASCENDING	634307132	002	02.13	DESIS.HSIL1A:/dims_n	
11	●	DESIS.HSIL1A	2021-09-18T13:51:53.369Z	2021-09-18T13:51:57.715Z	ISS	image_strip_mode	1	DESIS	0.61	ASCENDING	634294816	002	02.13	DESIS.HSIL1A:/dims_n	
12	●	DESIS.HSIL1A	2021-09-15T08:26:04.080Z	2021-09-15T08:26:08.426Z	ISS	image_strip_mode	1	DESIS	3.82	ASCENDING	633187864	030	02.13	DESIS.HSIL1A:/dims_n	
13	●	DESIS.HSIL1A	2021-09-15T08:25:59.730Z	2021-09-15T08:26:04.075Z	ISS	image_strip_mode	1	DESIS	3.81	ASCENDING	633187864	029	02.13	DESIS.HSIL1A:/dims_n	
14	●	DESIS.HSIL1A	2021-09-15T05:14:06.222Z	2021-09-15T05:14:10.568Z	ISS	image_strip_mode	1	DESIS	19.55	ASCENDING	633183760	014	02.13	DESIS.HSIL1A:/dims_n	
15	●	DESIS.HSIL1A	2021-09-15T05:14:01.873Z	2021-09-15T05:14:06.218Z	ISS	image_strip_mode	1	DESIS	19.55	ASCENDING	633183760	013	02.13	DESIS.HSIL1A:/dims_n	
16	●	DESIS.HSIL1A	2021-09-14T22:42:24.724Z	2021-09-14T22:42:29.071Z	ISS	image_strip_mode	1	DESIS	18.3	DESCENDING	633178376	002	02.13	DESIS.HSIL1A:/dims_n	
17	●	DESIS.HSIL1A	2021-09-14T22:42:20.375Z	2021-09-14T22:42:24.720Z	ISS	image_strip_mode	1	DESIS	18.3	DESCENDING	633178376	001	02.13	DESIS.HSIL1A:/dims_n	
18	●	DESIS.HSIL1A	2021-09-14T06:02:27.880Z	2021-09-14T06:02:32.225Z	ISS	image_strip_mode	1	DESIS	10.6	ASCENDING	632820264	028	02.13	DESIS.HSIL1A:/dims_n	
19	●	DESIS.HSIL1A	2021-09-13T21:51:54.381Z	2021-09-13T21:51:58.727Z	ISS	image_strip_mode	1	DESIS	3.13	DESCENDING	632809240	002	02.13	DESIS.HSIL1A:/dims_n	
20	●	DESIS.HSIL1A	2021-09-13T21:51:50.032Z	2021-09-13T21:51:54.377Z	ISS	image_strip_mode	1	DESIS	3.14	DESCENDING	632809240	001	02.13	DESIS.HSIL1A:/dims_n	

EOWEB functionalities

Filter Management

Filter: Region

Clear Filters

Hide Filter Gallery

Filter by Region



Hide Advanced Map

Filter by Time

Starttime
1970-01-01
00 HH 00 MM

Endtime
2021-09-24
23 HH 59 MM

Choose a range

Filter by Collection

- ISX-1 Experimental Products
- TanDEM-X
- IRS
- Thematic Maps
- FireBIRD
- TanDEM-X Pursuit TSX-1 Like
- TanDEM-X Pursuit TSX-1 Like Experimental
- DESIS

Search

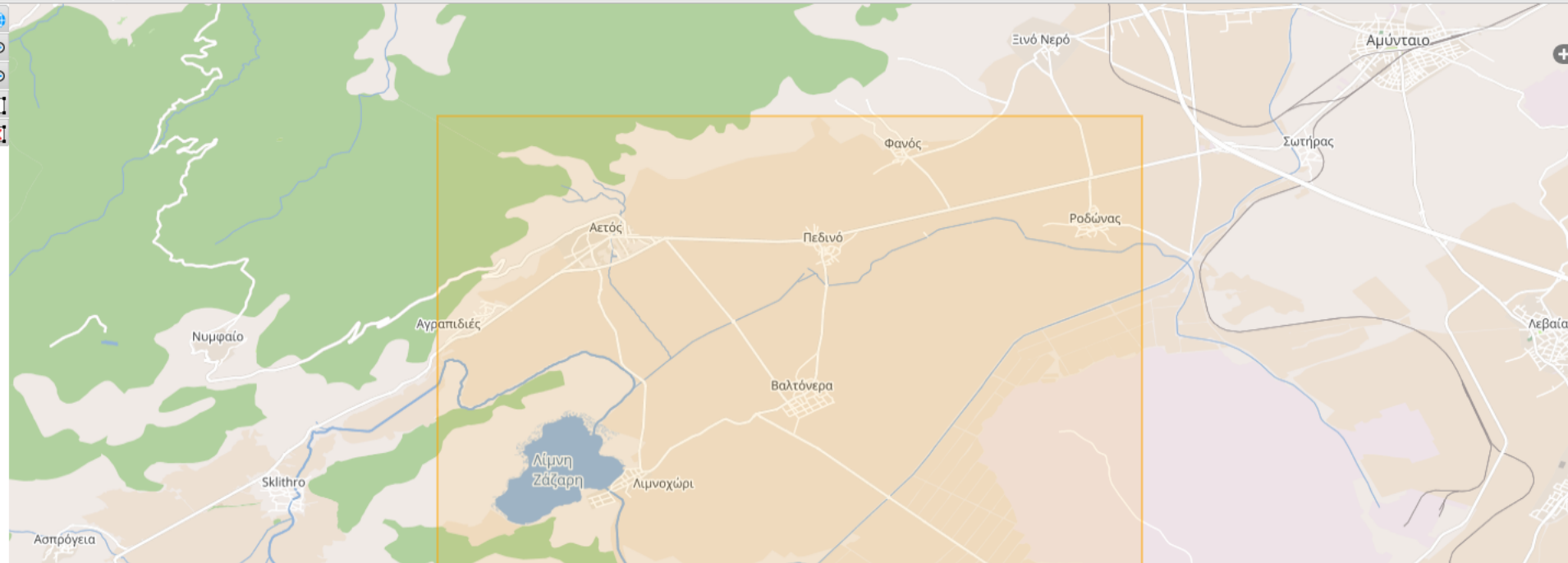
Predefined Regions Bounding Box Import AOI

Durchsuchen... LakeZazari_BenDor_CHIME.kml

Submit the file

Only *.shp and *.kml files are supported

Last uploaded file: C:\fakepath\LakeZazari_BenDor_CHIME.kml



EOWEB functionalities

Filter by Region

Show Advanced Map

Filter by Time

Starttime: 1970-01-01 00:00
Endtime: 2021-09-24 23:59

Choose a range

Filter by Collection

- ISX-1 Experimental Products
- TanDEM-X
- IRS
- Thematic Maps
- FireBIRD
- TanDEM-X Pursuit TSX-1 Like
- TanDEM-X Pursuit TSX-1 Like Experimental
- DESIS

Search

Nr	Avail.	Product Type	Start Date	End Date	Mission/Satellite	Sensor Mode	Satellite Number	Sensor/Instrument	Incidence Angle	Scene Center	Pass Direction	Datatake ID	Tile ID	Version
1	●	DESIS.HSIL1A	2021-08-17T06:17:12.104Z	2021-08-17T06:17:16.451Z	ISS	image_strip_mode	1	DESIS	9.95	ASCENDING	622510144	009	02.13	DESIS.HSIL1A:/dims_nz
2	●	DESIS.HSIL1A	2021-08-17T06:17:07.755Z	2021-08-17T06:17:12.101Z	ISS	image_strip_mode	1	DESIS	9.96	ASCENDING	622510144	008	02.13	DESIS.HSIL1A:/dims_nz
3	●	DESIS.HSIL1A	2021-08-09T09:22:18.201Z	2021-08-09T09:22:22.547Z	ISS	image_strip_mode	1	DESIS	12.79	ASCENDING	618867908	008	02.13	DESIS.HSIL1A:/dims_nz
4	●	DESIS.HSIL1A	2021-08-05T10:54:51.099Z	2021-08-05T10:54:55.445Z	ISS	image_strip_mode	1	DESIS	14.28	ASCENDING	618109560	002	02.13	DESIS.HSIL1A:/dims_nz
5	●	DESIS.HSIL1A	2021-08-05T10:54:46.750Z	2021-08-05T10:54:51.095Z	ISS	image_strip_mode	1	DESIS	14.29	ASCENDING	618109560	001	02.13	DESIS.HSIL1A:/dims_nz
6	●	DESIS.HSIL1A	2021-06-06T10:48:36.954Z	2021-06-06T10:48:41.301Z	ISS	image_strip_mode	1	DESIS	3.1	ASCENDING	595619688	002	02.13	DESIS.HSIL1A:/dims_nz
7	●	DESIS.HSIL1A	2021-06-06T10:48:32.605Z	2021-06-06T10:48:36.950Z	ISS	image_strip_mode	1	DESIS	3.1	ASCENDING	595619688	001	02.13	DESIS.HSIL1A:/dims_nz
8	●	DESIS.HSIL1A	2021-06-02T12:21:24.077Z	2021-06-02T12:21:28.423Z	ISS	image_strip_mode	1	DESIS	2.69	ASCENDING	594499772	002	02.13	DESIS.HSIL1A:/dims_nz
9	●	DESIS.HSIL1A	2021-06-02T12:21:19.727Z	2021-06-02T12:21:24.074Z	ISS	image_strip_mode	1	DESIS	2.69	ASCENDING	594499772	001	02.13	DESIS.HSIL1A:/dims_nz
10	●	DESIS.HSIL1A	2020-10-17T12:58:29.666Z	2020-10-17T12:58:34.012Z	ISS	image_strip_mode	1	DESIS	20.71	DESCENDING	510432852	002	02.10	DESIS.HSIL1A:/dims_nz
11	●	DESIS.HSIL1A	2020-10-17T12:58:25.317Z	2020-10-17T12:58:29.661Z	ISS	image_strip_mode	1	DESIS	20.72	DESCENDING	510432852	001	02.10	DESIS.HSIL1A:/dims_nz
12	●	DESIS.HSIL1A	2020-10-13T08:02:36.880Z	2020-10-13T08:02:41.226Z	ISS	image_strip_mode	1	DESIS	12.33	ASCENDING	508971132	002	02.10	DESIS.HSIL1A:/dims_nz
13	●	DESIS.HSIL1A	2020-10-13T08:02:32.531Z	2020-10-13T08:02:36.878Z	ISS	image_strip_mode	1	DESIS	12.34	ASCENDING	508971132	001	02.10	DESIS.HSIL1A:/dims_nz
14	●	DESIS.HSIL1A	2020-10-09T09:36:42.090Z	2020-10-09T09:36:46.436Z	ISS	image_strip_mode	1	DESIS	11.12	ASCENDING	507483584	002	02.10	DESIS.HSIL1A:/dims_nz
15	●	DESIS.HSIL1A	2020-10-09T09:36:37.740Z	2020-10-09T09:36:42.086Z	ISS	image_strip_mode	1	DESIS	11.13	ASCENDING	507483584	001	02.10	DESIS.HSIL1A:/dims_nz
16	●	DESIS.HSIL1A	2020-10-01T12:42:15.773Z	2020-10-01T12:42:20.118Z	ISS	image_strip_mode	1	DESIS	13.18	ASCENDING	504554576	002	02.10	DESIS.HSIL1A:/dims_nz
17	●	DESIS.HSIL1A	2020-10-01T12:42:11.422Z	2020-10-01T12:42:15.769Z	ISS	image_strip_mode	1	DESIS	13.19	ASCENDING	504554576	001	02.10	DESIS.HSIL1A:/dims_nz
18	●	DESIS.HSIL1A	2020-08-11T08:54:06.059Z	2020-08-11T08:54:10.405Z	ISS	image_strip_mode	1	DESIS	16.88	ASCENDING	485783732	008	02.10	DESIS.HSIL1A:/dims_nz
19	●	DESIS.HSIL1A	2020-08-11T08:54:01.709Z	2020-08-11T08:54:06.053Z	ISS	image_strip_mode	1	DESIS	16.89	ASCENDING	485783732	007	02.10	DESIS.HSIL1A:/dims_nz
20	●	DESIS.HSIL1A	2020-08-07T10:27:38.405Z	2020-08-07T10:27:42.751Z	ISS	image_strip_mode	1	DESIS	16.67	ASCENDING	484319516	002	02.10	DESIS.HSIL1A:/dims_nz

Hide Preview

EOWEB functionalities

Filter Management Filter: Region Collections Clear Filters Hide Filter Gallery

Filter by Region

Show Advanced Map

Filter by Time

Starttime: 1970-01-01 00:00:00
Endtime: 2021-09-24 23:59:00
Choose a range

Filter by Collection

- ISX-1 Experimental Products
- TanDEM-X
- IRS
- Thematic Maps
- FireBIRD
- TanDEM-X Pursuit TSX-1 Like
- TanDEM-X Pursuit TSX-1 Like Experimental
- DESIS

Search

0 of 20 results selected

Toggle View

Show items: 20

Go to: 1 / 2

1 DESIS.HSIL1A 2021-08-17T06:17:12.104Z - 2021-08-17T06:17:16.451Z	2 DESIS.HSIL1A 2021-08-17T06:17:07.755Z - 2021-08-17T06:17:12.101Z	3 DESIS.HSIL1A 2021-08-09T09:22:18.201Z - 2021-08-09T09:22:22.547Z	4 DESIS.HSIL1A 2021-08-05T10:54:51.099Z - 2021-08-05T10:54:55.445Z	5 DESIS.HSIL1A 2021-08-05T10:54:46.750Z - 2021-08-05T10:54:51.095Z	6 DESIS.HSIL1A 2021-06-06T10:48:36.954Z - 2021-06-06T10:48:41.301Z	7 DESIS.HSIL1A 2021-06-06T10:48:32.605Z - 2021-06-06T10:48:36.950Z	8 DESIS.HSIL1A 2021-06-02T12:21:24.077Z - 2021-06-02T12:21:28.423Z	9 DESIS.HSIL1A 2021-06-02T12:21:19.727Z - 2021-06-02T12:21:24.074Z
10 DESIS.HSIL1A 2020-10-17T12:58:29.666Z - 2020-10-17T12:58:34.012Z	11 DESIS.HSIL1A 2020-10-17T12:58:25.317Z - 2020-10-17T12:58:29.661Z	12 DESIS.HSIL1A 2020-10-13T08:02:36.880Z - 2020-10-13T08:02:41.226Z	13 DESIS.HSIL1A 2020-10-13T08:02:32.531Z - 2020-10-13T08:02:36.878Z	14 DESIS.HSIL1A 2020-10-09T09:36:42.090Z - 2020-10-09T09:36:46.436Z	15 DESIS.HSIL1A 2020-10-09T09:36:37.740Z - 2020-10-09T09:36:42.086Z	16 DESIS.HSIL1A 2020-10-01T12:42:15.773Z - 2020-10-01T12:42:20.118Z	17 DESIS.HSIL1A 2020-10-01T12:42:11.422Z - 2020-10-01T12:42:15.769Z	18 DESIS.HSIL1A 2020-08-11T08:54:06.059Z - 2020-08-11T08:54:10.405Z

EOWEB functionalities

Filter by Region



Show Advanced Map

Filter by Time

Starttime: 1970-01-01 00:00
Endtime: 2021-09-24 23:59
Choose a range

Filter by Collection

- ISX-1 Experimental Products
- TanDEM-X
- IRS
- Thematic Maps
- FireBIRD
- TanDEM-X Pursuit TSX-1 Like
- TanDEM-X Pursuit TSX-1 Like Experimental
- DESIS

Search

1 of 24 results selected

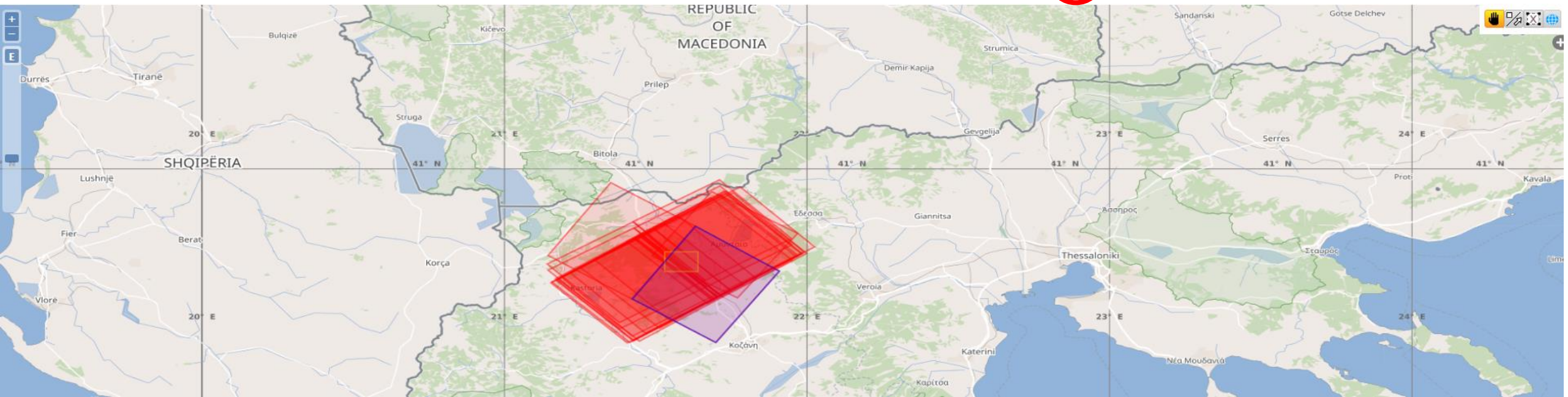


Toggle View



Show items: 100

Go to: 1 / 1



EOWEB functionalities

[DE.SIS.HSI.L1A:/dims_nz_pl_dfd_XXXXB00000000555326815109/dims_nz_pl_dfd_//DE.SIS.HSI.L1A](#)



startTime	2020-10-17T12:58:29.666Z
stopTime	2020-10-17T12:58:34.012Z
parentIdentifier	urn:eop:DLR:EOWEB:DE.SIS.HSI.L1A
doi	10.15489/hxom21uqeo90
status	EXISTING
acquisitionType	NOMINAL
orbitDirection	DESCENDING
nativeProductFormat	bil
illuminationAzimuthAngle	225.400266
illuminationElevationAngle	61.993447
acquisitionSubType	earth
incidenceAngle	20.71
processingLevel	L1A
alongTrackPointingAngle	0.055812

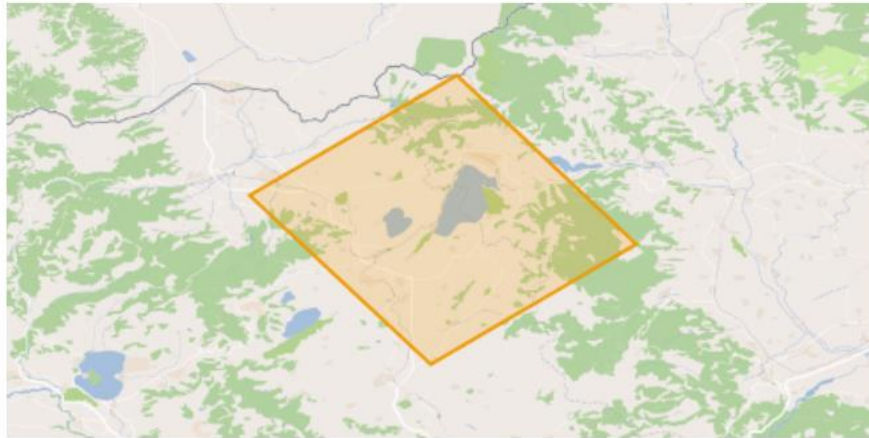
EOArchivingInformation

EOArchivingInformation	NZ
archivingIdentifier	DE.SIS.HSI.L1A:/dims_nz_pl_dfd_XXXXB00000000555326815109/dims_nz_pl_dfd_//DE.SIS.HSI.L1A
archivingDate	2020-10-25T17:55:26.922Z

EOWEB functionalities

framePeriod	118
autoGainThreshold	4000
dataVersion	2
sceneAzimuthAngle	59.488346

Polygon (40.533456015,21.744544223), (40.699179609,22.024403259), (40.929955295,21.779600499), (40.766398094,21.496525483), (40.533456015,21.744544223), (40.533456015,21.744544223)



EOWEB functionalities



[← Back to List](#)

DESI.SHS.L1A:/dims_nz_pl_dfd_XXXXB0000000588528366643/dims_nz_pl_dfd_//DESI.SHS.L1A
Start: 2021-08-17T06:17:12.104Z, Stop: 2021-08-17T06:17:16.451Z, Orbit Direction: ASCENDING

Add to Order

DESI.SHS.L1A:/dims_nz_pl_dfd_XXXXB0000000588528366643/dims_nz_pl_dfd_//DESI.SHS.L1A

Items marked with a asterisk (*) are mandatory.

Order Option :
ProductType: DESIS Level 1A Product, UserGroup: Internal Users
Access Constraints
Access Constraints
Access Constraints

Delivery


Delivery Methods* : ftps

Delivery Mediums* : file

Item Size : --

Product
Compression : --

Product Format* : GeoTIFF

Scene Selection Map 



EOWEB functionalities

Processing Option

Processing Level* : L2A

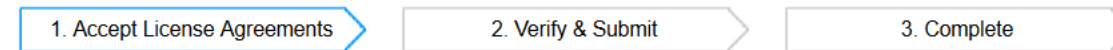
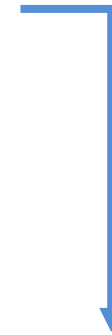
Map Projection* : Universal Transverse Mercator (U... ▼

Image Resampling* : Bilinear Interpolation ▼

Ozone Column for Atmospheric Correction [DU]* : 330 ▲▼

Atmospheric correction mode for land surfaces* : Auto ▼

SW Binning* : 1 ▼



Accept License Agreements

Please read and accept the following license agreements by placing a checkmark inside the checkboxes.

I accept the [D-SDA Data License Terms](#)

I accept the [DESIIS License Agreement](#)

Data product components

Name	Description	File Format	File Size
DESIS.HSI.LXX-SPECTRAL-IMAGE	Measurement data from Earth datatake	TIF	500 Mbytes
DESIS.HSI.LXX-QL...	Image Quicklook	TIF	6 Mbytes
	Data Quality Quicklook <ul style="list-style-type: none"> Each layer corresponds to a band and contains information about the quality of the image pixels in that band encoded as a 8-bit mask 	TIF	Variable
	Data Quality Quicklook-2 (only for L2A products) <ul style="list-style-type: none"> 10 new mask layers (1-shadow, 2-clear/land, 3-snow, 4-haze/land, 5-haze/water, 6-cloud/land, 7-cloud/water, 8-water, 9-AOT, 10-WV) 	TIF	Variable
DESIS.HSI.LXX-METADATA	Metadata provided by the processors	XML	< 1Mbyte
DESIS.HSI.LXX-HDR	Metadata compliant to ENVI header	Ascii	< 1Mbyte
DESIS.HSI.LXX-HISTORY	History file for all processors executed	XML	<1 MByte
DESIS.HSI.LXX-LOG	Processing log file. Internal, not delivered to the user	Ascii	<1 MByte

More details on product components on:

https://www.dlr.de/eoc/PortalData/60/Resources/dokumente/DESIS/DESIS_Products/PAV-DLR-ICD-003.pdf

Thank you for your attention!

DESI Mission Manager

Uwe Knodt

Uwe.Knodt@dlr.de

DESI Ground Segment Manager

Rupert Müller

Rupert.Mueller@dlr.de

DESI Science Coordinator

Uta Heiden

Uta.Heiden@dlr.de

