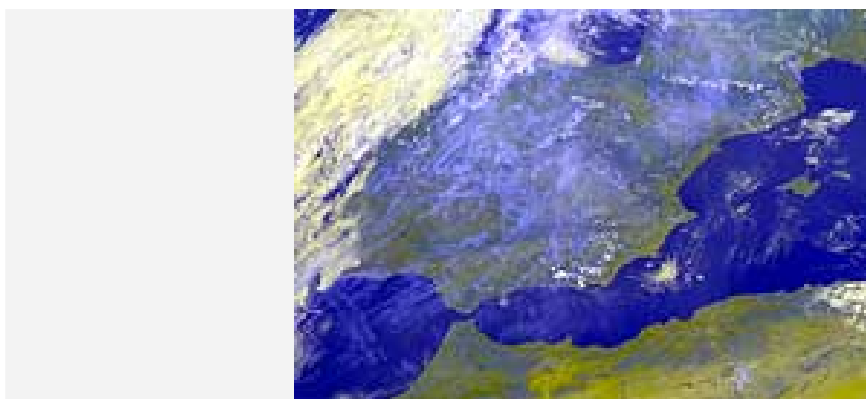


News Archive

DLR's climate research studies contribute to Nobel Prize

12 October 2007



Condensation trails and cirrus contrail over Spain and Portugal

The Nobel Peace Prize this year has been jointly awarded to the American politician Al Gore and the Intergovernmental Panel on Climate Change (IPCC). Both were praised by the Nobel Prize Committee for their efforts "to build up and disseminate greater knowledge about man-made climate change". The German Aerospace Centre (DLR) contributed to the work of the IPCC in the form of scientific results.

The Chairman of the Board of DLR, Professor Johann-Dietrich Wörner, is pleased about the high-profile award, in particular for Rajendra Pachauri - the Indian head of the IPCC. "This award highlights the great importance of the current IPCC report on climate change, including the statements on air traffic in which are to a large degree based on the research outcomes of DLR." In this respect Prof. Wörner also congratulated Professor Ulrich Schumann, the head of DLR's Institute for Atmospheric Physics, under whose leadership the DLR climate studies were created.

In 2007 scientists from the Institute for Atmospheric Physics contributed to reports made by the IPCC as authors, and in addition were the main authors of earlier IPCC reports in 2001 and 1999. In particular, DLR made a significant contribution to research on the influence of air traffic on the climate and already presented and evaluated these results in detail in 1999 in the IPCC report "Aviation and the Global Atmosphere". DLR is the international leader in this field.

In addition, scientists from the institute played a leading role in the creation of the progress report on the stratospheric destruction of the ozone layer, which appeared under the direction of the World Meteorological Organisation (WMO) in 2007. A major basis for many of these studies was satellite data that is received and processed by DLR's German Remote Sensing Data Centre (DFD) and evaluation methods developed by the Remote Sensing Technology Institute. Many of the research findings are based on measurements made by DLR's research plane *Falcon*. The DLR scientists congratulate the more than 1000 colleagues worldwide who contributed to the IPCC reports.

Contact

Henning Krause
German Aerospace Center
Corporate Communications
Tel: +49 2203 601-2502

Fax: +49 2203 601-3249
E-Mail: henning.krause@dlr.de

Contact details for image and video enquiries as well as information regarding DLR's terms of use can be found on the DLR portal imprint.