

Partners

In the SatNEx NoE, 24 partners from 10 European countries have joined their research forces, resulting in a wide-spread expertise for integration, ongoing joint research and spreading of excellence. The consortium is made up by a well-balanced mix of higher education institutions and research organisations, where two of the latter also have SME status. Relevant industry partners are integrated into SatNEx via the Advisory Board.

In the future, SatNEx aims to develop and grow the Network by introducing new partner institutions from Europe and beyond. Potential new partners that can demonstrate excellence in satellite communications are encouraged to contact the Network Coordinator with an expression of interest.

German Aerospace Center (DLR)	Germany
Aristotle University of Thessaloniki	Greece
University of Bradford	United Kingdom
Budapest University of Technology and Economics	Hungary
Centre National d'Etudes Spatiales	France
Consorzio Nazionale Interuniversitario per le Telecomunicazioni	Italy
European Space Agency – European Space Research and Technology Centre (ESTEC)	The Netherlands
Fraunhofer Gesellschaft zur Förderung der Angewandten Forschung e.V.	Germany
Groupe des Ecoles des Télécommunications	France
Institute of Communication and Computer Systems of NTUA	Greece
National Observatory of Athens	Greece
Istituto di Scienze e Tecnologia dell'Informazione "Alessandro Faedo"	Italy
Jozef Stefan Institute	Slovenia
Office National d'Etudes et de Recherches Aérospatiales	France
Salzburg University	Austria
Télécommunications Spatiales & Aéronautiques (TéSA)	France
Graz University of Technology	Austria
Universitat Autònoma de Barcelona	Spain
Universidad Carlos III de Madrid	Spain
The University of Surrey	United Kingdom
Department of Engineering, University of Aberdeen	United Kingdom
DEIS - University of Bologna	Italy
Università Degli Studi di Roma "Tor Vergata"	Italy
Universidad De Vigo	Spain

Further Information

If you would like to find out more about the SatNEx project please contact the Project Coordinator, Professor Erich Lutz: coordinator@satnex.org

The latest information on SatNEx can be found at the website:

<http://www.satnex.org>



Satellite Communications Network of Excellence (SatNEx)



Removing Barriers, Integrating Research, Spreading Excellence

EC Framework Programme 6 Project IST-027393



Information Society Technologies



Network of Excellence in Satellite Communications

SatNEx, a pan-European Network of Excellence (NoE) funded under the European Union's Framework Programme 6 Information Society Technologies Thematic Area, is now in its second phase of operation.

NoEs are designed to strengthen scientific and technological excellence on a particular research topic by networking together the critical mass of resources. Within this context, SatNEx, coordinated by the German Aerospace Center (DLR) and supported by the European Commission, brings together twenty-four of Europe's foremost universities and research institutions in satellite communications under a single collaborative umbrella. The pan-European nature of the Network draws on expertise from across the European Research Area, with representatives from Austria, France, Germany, Greece, Hungary, Italy, The Netherlands, Slovenia, Spain and the UK.

By building on the foundations laid by Phase I activities, SatNEX aims to develop a common base of knowledge. Advancing European research in satellite communications is a central objective of SatNEx. To achieve this, the SatNEx partners have established a Joint Programme of Activities (JPA) that addresses the research, as well as the integration and training needs of the European Union.

Joint Programme of Activities

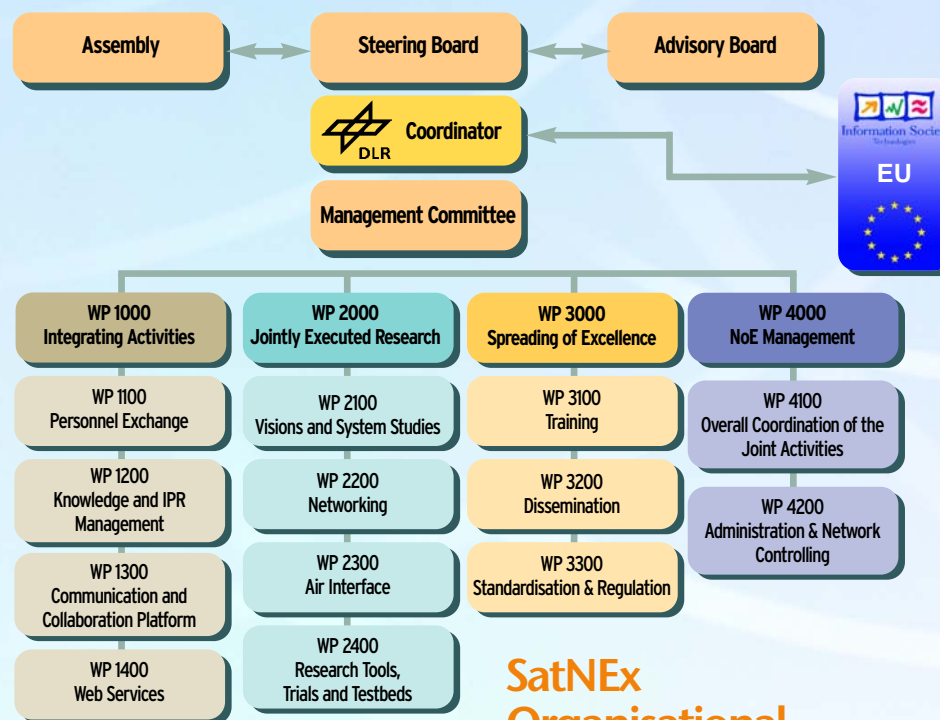
SatNEx's work programme is divided into four main streams of activity:

- WP 1000 Integrating Activities addresses the need to bring together the Network's researchers, the research tools and test-beds and to implement a satellite-based communication and collaboration platform.
- WP 2000 Jointly Executed Research covers visions and joint research strategies, as well as research topics in networks and radio interface, supported by system studies and research trials.
- WP 3000 Spreading of Excellence provides opportunities for training, disseminates information, performs knowledge transfer and supports standardisation activities.
- WP 4000 ensures the smooth day-to-day operation of the Network.

Joint Activities

The philosophy underlying the SatNEx approach consists in the selection of focused actions within the broad framework described by the overall JPA, in order to capitalise on the breadth and depth of expertise that are present within the Network and to make sure that the integration is effective and durable.

These focused actions are to be carried out jointly by the partners and are identified as Joint Activities. They include research, integration and disseminating activities.



SatNEx Organisational Structure

Initial Joint Activities include:

Integration

- Removing Barriers to Integration
- Collective Research Portfolio
- Networking Means for Integration and Dissemination

Jointly Executed Research

- Satellites in 3G and Beyond
- Integrated Multi-Platform Systems
- Cross-Layer Protocol Design
- Radio Resource Allocation and Adaptation

- Broadband Access Networks
- Access, Network and Transport Layer Trials
- Satellite Networking in Challenging Environments
- IP-Networking Optimization
- Physical Layer
- Application Layer Trials
- Network Security and Network Management
- Channel Modelling and Propagation Impairments Simulation

Management Structure

Several entities are involved in the management and organisation-related tasks of the Network, including:

- the Steering Board, which is responsible for the overall coordination of the Joint Activities of the Network;
- the Advisory Board, which is made up of representatives from industry and regulatory bodies; contact with the Advisory Board ensures that SatNEx's long-term research strategy is matched to industry needs;
- the Management Committee, which comprises the leaders of each of the major work streams;
- and the Assembly, which has representation from all partners.

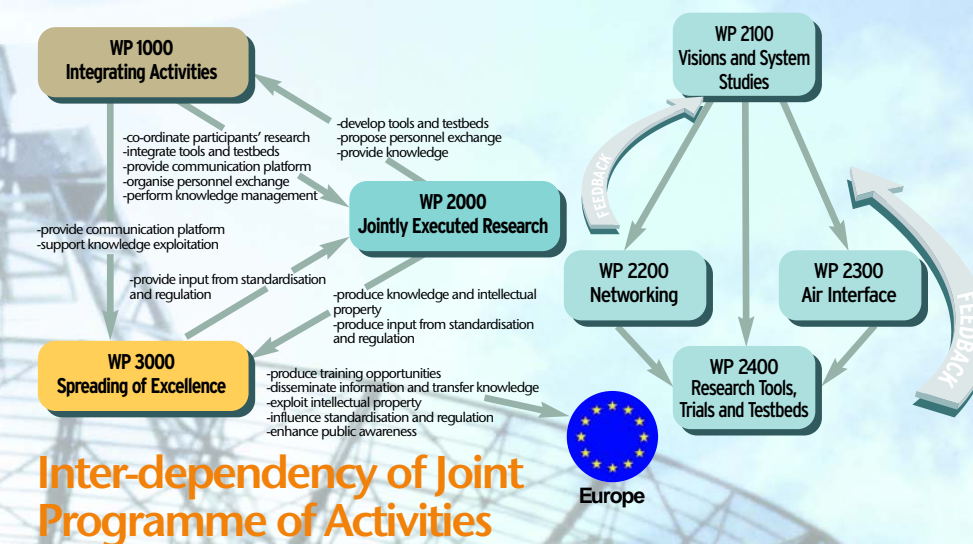
Communication with the European Commission is the responsibility of the coordinator, DLR.

Working within the Satellite Community

SatNEx offers many opportunities for those that are interested in finding out more about satellite communications. As part of its remit to spread excellence, SatNEx aims to work across many knowledge sectors, from local schools to hi-tech industry by, for example:

- Organising an annual summer school event;
- Offering internships for undergraduate and postgraduate students;
- Developing pan-European degree programmes between partner universities;
- Providing general and specialised training programmes to industry;
- Developing new ways of learning that exploit the technological platforms that are available to the Network.

SatNEx receives funding from the EU in the form of a grant for integration. The partners within the Network augment this funding with a substantial amount of additional self-funded work, which reflects the commitment of all participants to establish SatNEx as a long-lasting and durable Network.



Inter-dependency of Joint Programme of Activities